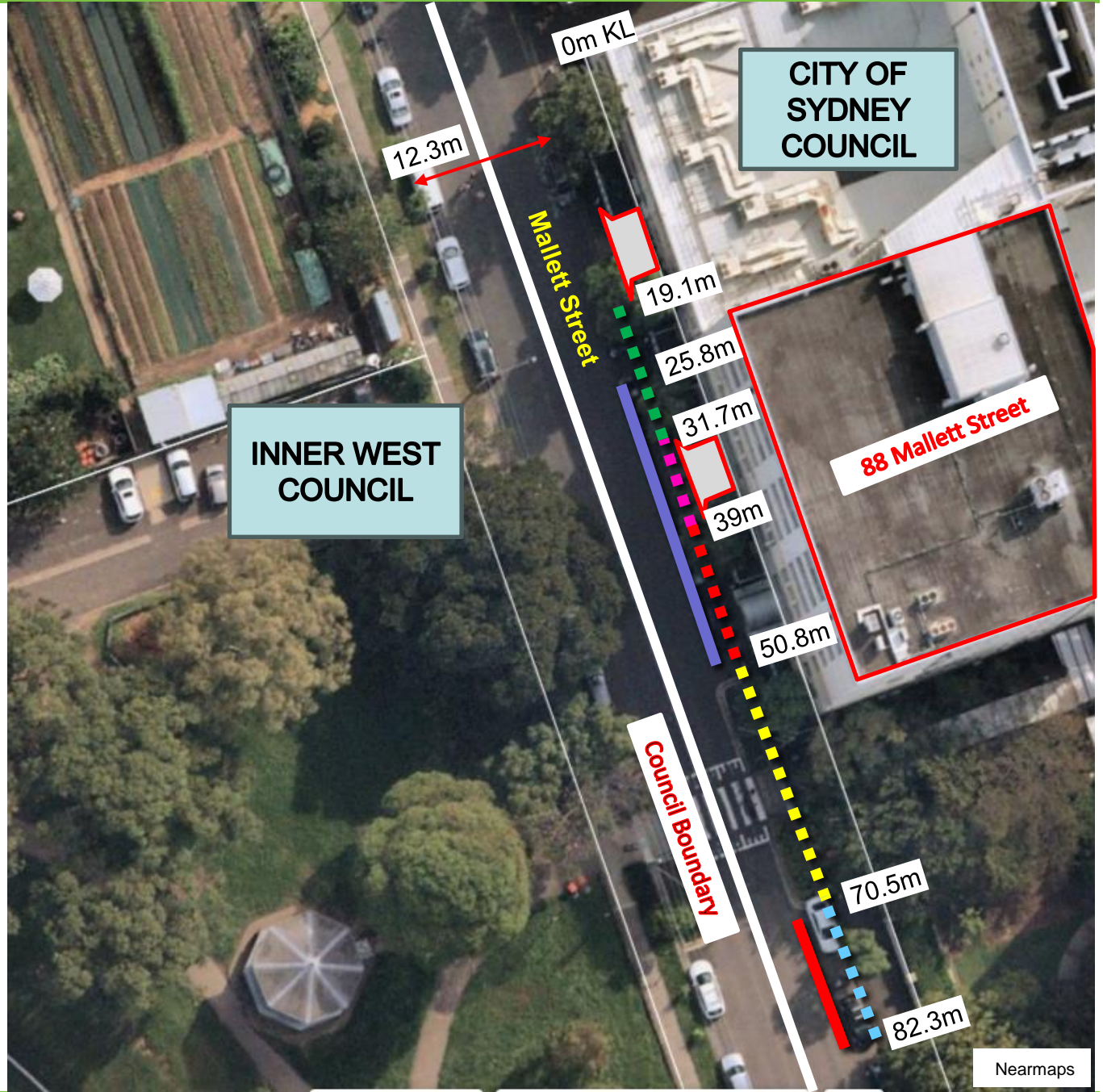





Mallett Street, Camperdown Proposed Works Zone






Existing

-  "No Stopping"
-  "No Parking, 8:30am-5pm Mon-Fri Authorised Disabled Persons Vehicles Excepted"
-  "1P 8:30am-5pm Mon-Fri"

-  "No Parking"
-  "2P 8am-10pm Mon-Fri Permit Holders Excepted Area 22"
-  Driveway

Proposed

-  "Works Zone 7:30am-5:30pm Mon-Fri 7:30am-3:30pm Sat"
-  "No Parking, 8:30am-5pm Mon-Fri Authorised Disabled Persons Vehicles Excepted"
-  "2P 5pm-10pm Mon-Fri Permit Holders Excepted Area 22"